

1500L SELF-CONTAINED TANK SHOWER WITH CHILLER

MODEL: TS1500CH

Ideal for outdoor, hot climates and fully compliant with ANSI standards, this tank shower guarantees over 15 minutes of tepid water without the need of a mains water supply. The unit is completely corrosion resistant and suitable for hazardous environments. The chiller ensures water is kept at 20°C, helping to reduce the growth of bacteria.

**MADE IN
BRITAIN**



KEY FEATURES

- Over 15 minutes tepid water
- Manufactured in house, in the UK
- Photo-luminous pictorial signs
- 20°C water - **day or night**

OPERATING CONDITIONS

WATER SUPPLY PRESSURE 0.5 - 6 bar
TEMPERATURE Up to 60°C

TECHNICAL DETAILS

INLET CONNECTION 1" BSPM (*flanged options available*)
SHOWER DRAIN OUTLET CONNECTION - if fitted 2" BSPF
SCREENED OVERFLOW 40mm PVC-U
SHOWER FLOW RATE 76lpm
EYEBATH FLOW RATE Min 1.5lpm
BALL FLOAT VALVES for quick refill 2 x 3/4" stainless valves with 6" plastic floats
SHOWER OPERATION Panic bar (*GRP foot platform as option*)
EYEBATH OPERATION Lift lid (*stainless foot operation as option*)

MATERIAL DETAILS

HEADER TANK 1500L green insulated GRP (*other colours available*)
HEADER TANK LID White insulated GRP
SHOWER FRAME 304 stainless steel as standard (*316 as option*)
OPERATING VALVES Stainless steel
SHOWER ROSE Yellow - ABS (*stainless as options*)
PANIC BAR/TESTING LEVER Stainless steel (*powder coated red for high visibility*)
CHILLER PEDESTAL Stainless steel
CHILLER TO TANK CONNECTIONS ABS pipe and stainless steel hose (x2)
PANELLING - if fitted Side & rear - green GRP
SHOWER PLATFORM - if fitted Yellow non-slip GRP
OVERHEAD SUN CANOPY - if fitted White insulated GRP
EYEBATH - if fitted Yellow GRP + 2 low pressure nozzles
EYEBATH FOOT TREADLE - if fitted Stainless steel (*powder coated red for high visibility*)
TEMPERATURE GAUGE - if fitted Stainless steel - 150mm diameter
WATER HEATER - if fitted 2.4Kw (*Non-hazardous*)

www.aqua-safety.com



Aqua Safety Showers International Ltd,
Redgate Road, South Lancashire Industrial Estate,
Ashton-in-Makerfield, Wigan, WN4 8DT. UK



sales@aquasafety.com



+44 (0) 1942 318096

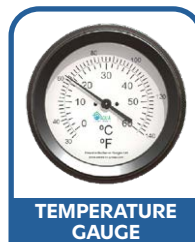


VAT No: 259714570
Registration No: 10427026

CHILLER DETAILS

EXPLOSIVE ATMOSPHERE COMPLIANCE	ATEX
ELECTRICAL COMPONENT CERTIFICATION	ATEX and IECEx
SUITABLE ENVIRONMENT	Zone 1
UNIT CLASSIFICATION	II 2G IIB T4
OPERATING LIMITS	0 to +60°C
INGRESS PROTECTION CLASSIFICATION	IP 66
NOISE LEVEL (at 1m distance)	77 (dBa)
SAFETY FEATURES	Compressor Motor Protection, Phase Sequence Monitor, HP and LP Safety Switch, Flow Switch
TOTAL COOLING DUTY	3 (kW)
ADJUSTABLE WATER TEMPERATURE RANGE	+20 to +36°C
REFRIGERANT	R134a
COOLING DUTY DESIGN POINT	+43 (°C)
UNIT OPERATING WEIGHT	195 (kg)
OVERALL DIMENSIONS (l x w x h)	1016.5 x 697.5 x 1172 (mm)
SERVICE SPACE / AIRFLOW CLEARANCE	600 (mm)
CONDENSER TUBE / FIN MATERIAL	Copper (Cu) / Aluminium (Al)
CASING MATERIAL	Zinc Coated Mild Steel (Zintec)
CASING MATERIAL FINISH	White Polyester Industrial Powder Coated
FLUID FLOW RATE	2.16 (m ³ /h)
FLUID SUPPLY CONNECTION TYPE / SIZE	Female BSP / 3/4" (inch)
FLUID RETURN CONNECTION TYPE / SIZE	Female BSP / 3/4" (inch)
INTERNAL WATER CIRCUIT MATERIAL	ABS Thermoplastic Polymer
ELECTRICAL POWER SUPPLY	380-415 / 3 / 50 or 440-460 / 3 / 60 (V/Ph/Hz)
TOTAL POWER CONSUMPTION (50Hz / 60Hz)	2.23 / 2.27 (kW)
RUNNING CURRENT (50Hz / 60Hz)	4.62 / 4.76 (A)
MAXIMUM RUNNING CURRENT (50Hz / 60Hz)	5.87 (A)
CONTROL VOLTAGE	220 / 230 / 240 (Vac)

OPTIONAL EXTRAS



www.aqua-safety.com



Aqua Safety Showers International Ltd,
Redgate Road, South Lancashire Industrial Estate,
Ashton-in-Makerfield, Wigan, WN4 8DT. UK



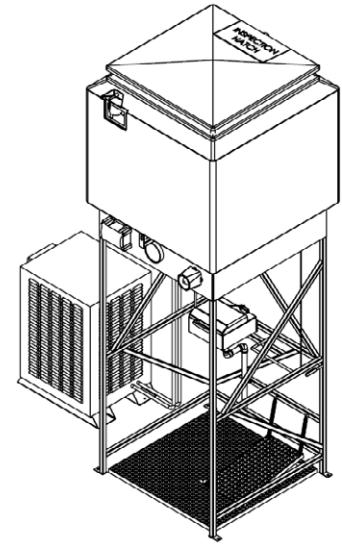
sales@aquasafety.com



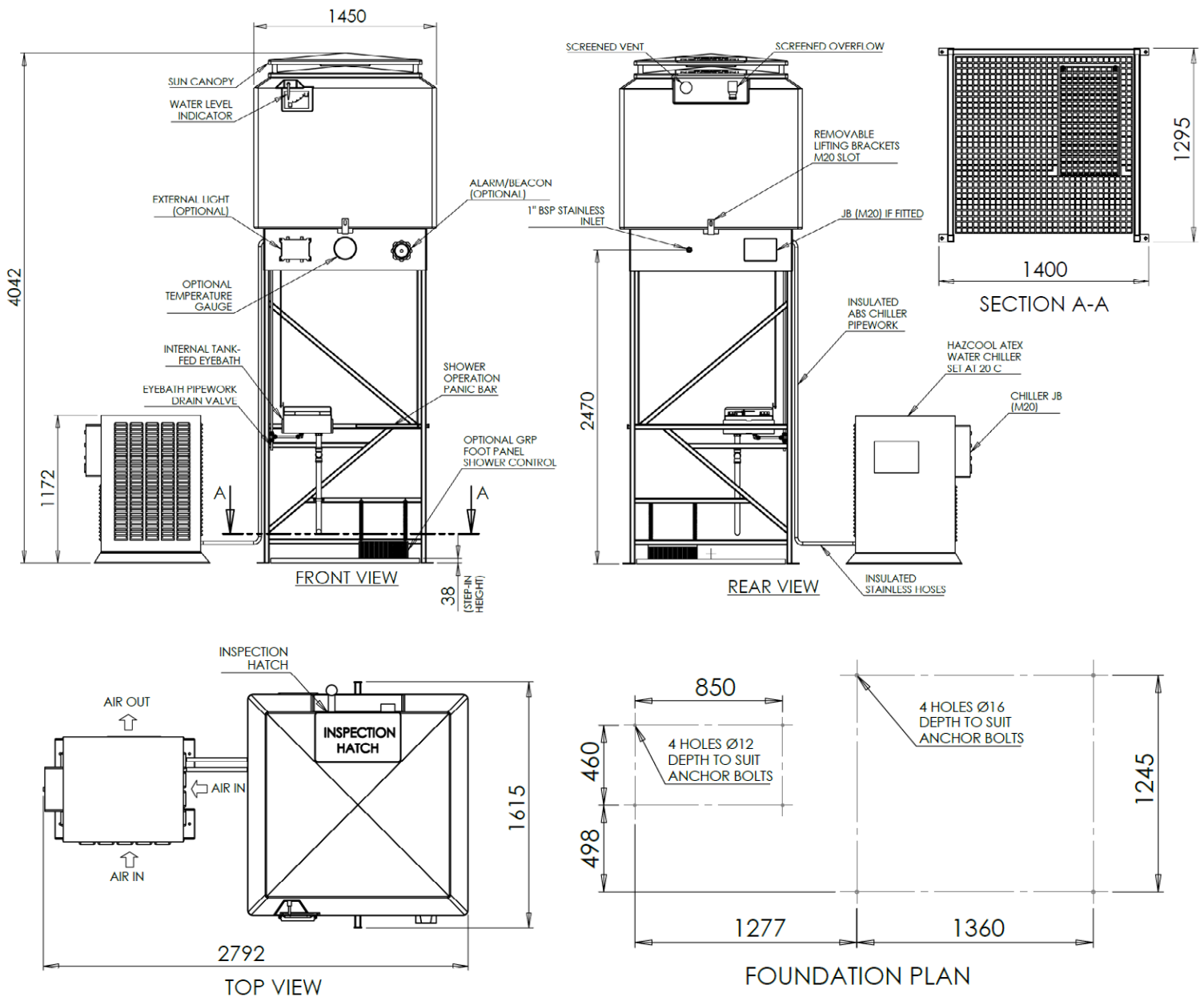
+44 (0) 1942 318096



VAT No: 259714570
Registration No: 10427026



TECHNICAL DRAWINGS



www.aqua-safety.com



Aqua Safety Showers International Ltd,
Redgate Road, South Lancashire Industrial Estate,
Ashton-in-Makerfield, Wigan, WN4 8DT. UK



sales@aquasafety.com



+44 (0) 1942 318096



VAT No: 259714570
Registration No: 10427026